

Solution Brochure | PUBLIC

# Intelligent ERP

## The Power to Rise Above Customer Expectations

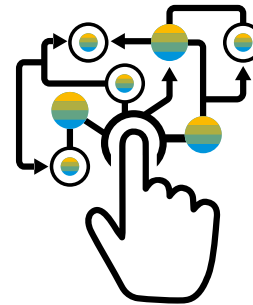




## Enterprise Resource Planning **Re-imagined**

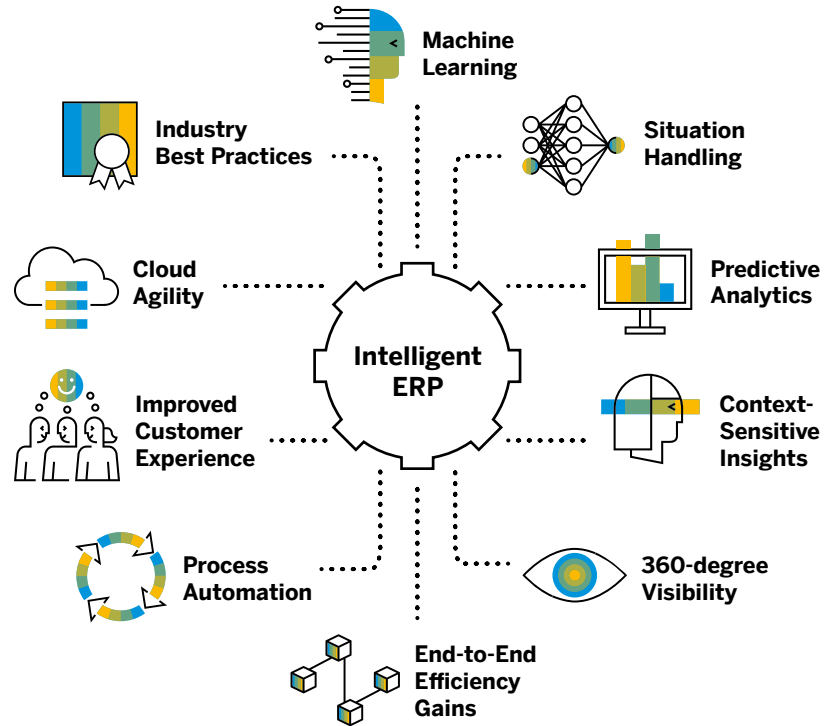
In today's hyper-connected operating environment where supply chain automation and managing customer experiences are all the rage, conventional ERP – as monolithic systems of record – is no longer fit-for-purpose. Aspiring market leaders now demand reliable contextual insights that can fuel split-second decisions and enable real time adaptation to market dynamics.

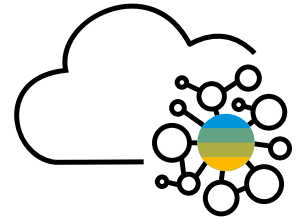
Next-generation, cloud-based intelligent ERP systems respond to this need with an altogether more sophisticated and cognitive approach: one that blends machine learning, blockchain, and big data with a mobile-first perspective that places user experience front and centre.





For its part, SAP's flagship Intelligent ERP, SAP S/4HANA® Cloud, provides customers with the broadest and deepest AI-powered functionality on the market, unleashing unprecedented operational speed, efficiency, reliability and foresight.





## **MASTER THE MOMENT**

Today's operational advantage hinges upon a company's responsiveness to change. In a world spinning ever faster where disruption abounds, staying current is imperative. This means possessing the vigilance to anticipate developments before they arise and the agility to seamlessly adapt to emerging trends.

This is especially important for younger and still developing businesses that may need to scale up or down operations at a moment's notice yet lack the resources of their larger

competitors. The predictive analytics, situation handling, and process automation of Intelligent ERP endows you with immediate access to live data insights, enabling advanced decision-making on-the-fly, and enhanced customer response times.

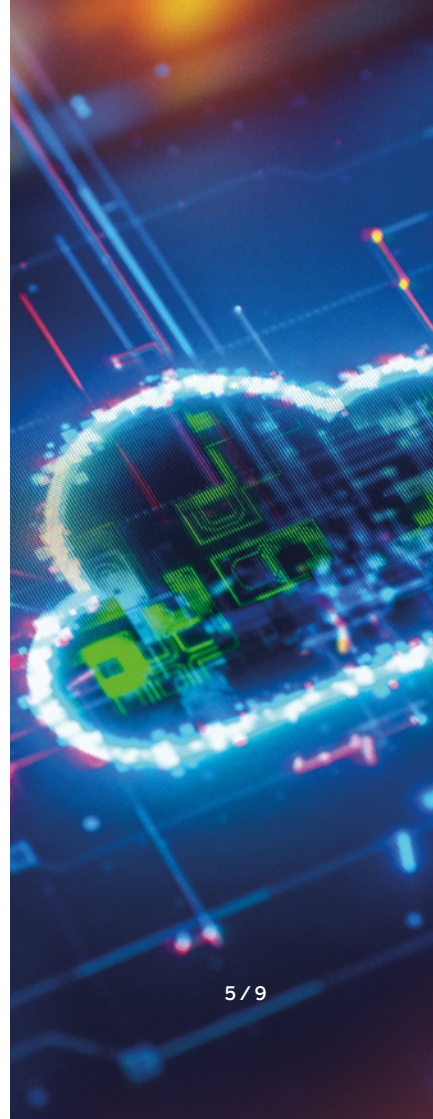
Moreover, having your Intelligent ERP in the Cloud hands you faster reporting accessible from anywhere 24/7 on any kind of device.

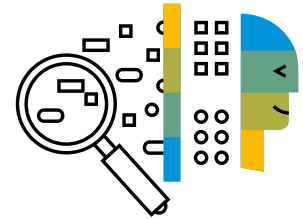


## **SEIZE CHANCES**

As business requirements evolve, so must the underlying digital architecture that supports them. Whereas legacy enterprise resource planning systems tend to be too rigid to support unfolding operational needs and lack the functionality to adopt new business models or align with future growth trajectories, SAP S/4HANA® Cloud is inherently agile and grows alongside your organisation.

When infused with intelligent technologies such as machine learning, the ERP system becomes continuously curious. It learns from your data and transaction patterns and recommends actions and changes to your processes systematically and automatically. This all-in-one, embedded flexibility and in-built scalability is particularly beneficial to upwardly mobile businesses that lack the resources and IT capabilities for repeated upgrades.





## **EMBRACE TOMORROW**

Monolithic ERP systems of yesteryear have lost their competitive edge. To win in the fast-moving markets of the future, companies will be reliant upon the sorts of context-sensitive insights across multiple line-of-business applications that only an Intelligent ERP can deliver.

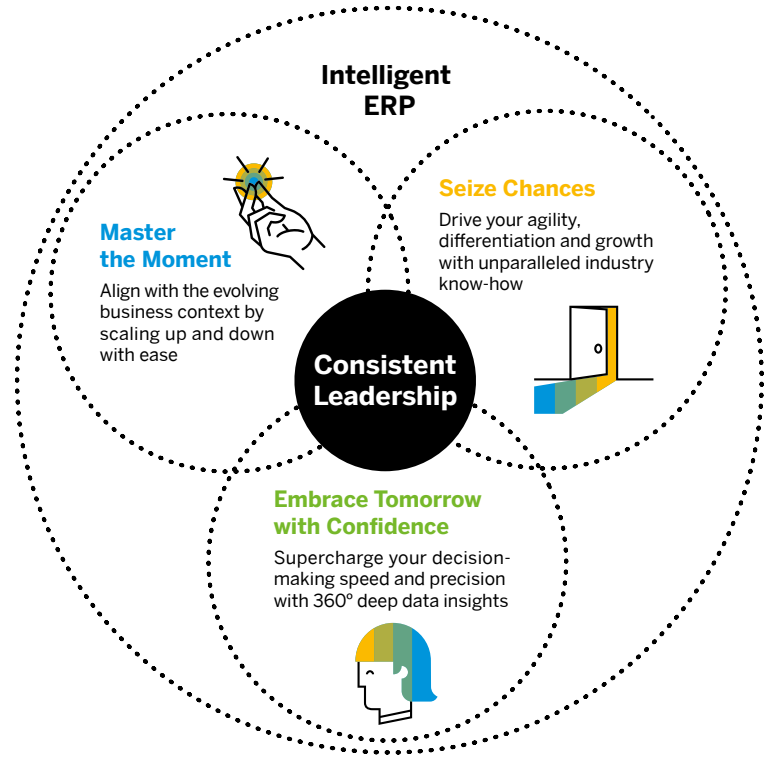
These capabilities pinpoint new patterns and adapt workflows accordingly, while generating a single source of supply chain, HR, and financial truth with which to power decisive enterprise-wide planning and enhance customer experiences.

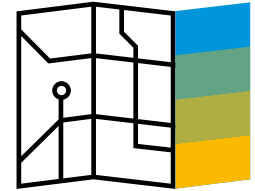
By unlocking deeper operational insights from across the length and breadth of your organisation, SAP S/4HANA® Cloud endows you with the self-awareness and under-standing to outwit your competitors.



# Equipped for **right now**

By bringing together the operational insights and know-how required to navigate each business context, Intelligent ERP attends to your everyday needs: enabling you to face down challenges and operate to the maximum of your potential.





## **YOUR ROADMAP TO AN INTELLIGENT ERP**

Making the step up to a next-generation ERP system is a necessary, but potentially daunting experience for younger and growing companies. That's why SAP has come up with a formula to ensure maximal business continuity and greatest ease.

As the first ever 'concierge service to an Intelligent Enterprise', RISE with SAP facilitates your transition over to modern cloud-based ERP. It bundles together all requisite tools, guidance, and support systems needed to get there with minimum hassle.

Moreover, it empowers you to chart your own unique course in whatever manner and timeframe works best for you – regardless of your starting point.

“RISE with SAP is the game-changer you deserve. It's your journey. Your decisions. Your destination. And we go there together.”

Christian Klein, Global CEO of SAP





# Winning the **digital transformation** long game

## Rapid Reaction Speeds

---

Act smarter by eliminating manual tasks. Harness machine learning, robotic process automation, and predictive analytics to transform your in-the-moment situation handling capabilities, and deliver equivalent levels of service, support, and customer responsiveness as your largest competitors.

## Embedded Flexibility

---

Enjoy scalability at reduced cost and complexity by wiring your organisation up to a cloud ERP solution that maintains competitiveness and supports your next phase of growth. This is because it not only keeps your data sources synchronised, but also accommodates business model evolution in real time.

## In-the-Moment Visibility

---

Furnish your business with a single, unified source of financial, people, and operational data. Deep insights paired with embedded AI hand you a 360° overview of your organisation, thus enabling you to be the first to spot new opportunities and threats in tomorrow's dynamic business context.

THE NEXT ERA OF ERP  
SAP S/4HANA® Cloud is a future-proof, next-generation cloud ERP system with built-in intelligent technologies. It combines intelligent automation with a leading in-memory database delivering real-time processing on a drastically simplified data model.

- 100x faster reporting for **agile decisions**
- Extended real-time analytics for **better forecasts**
- Embedded AI for **deeper understanding**

Integrated industry-specific work-flows for **superior performance**



**London, UK (Europe HQ)**  
1 Heathgate Place, Agincourt Road  
London, NW3 2NU  
Tel: +44 (0) 20 4526 8479  
info@vision33.co.uk  
[vision33.co.uk](http://vision33.co.uk)

**Irvine, CA (USA HQ)**  
7545 Irvine Center Drive, Suite 200  
Irvine, California 92618  
Tel: +1 949 420 3300  
contact@vision33.com  
[vision33.com](http://vision33.com)

**St. John's, NL (CAN HQ)**  
210 Water Street, Suite #400  
St. John's, NL A1C 1A9  
Tel: +1 709 722 7213  
contact@vision33.com  
[vision33.com](http://vision33.com)

SAP Studio | 75490enUS (21/05)

served. © 2021 SAP SE or an SAP affiliate company. All rights reserved.

No part of this publication may be reproduced or transmitted in any form or for any purpose without the express permission of SAP SE or an SAP affiliate company.

The information contained herein may be changed without prior notice. Some software products marketed by SAP SE and its distributors contain proprietary software components of other software vendors. National product specifications may vary.

These materials are provided by SAP SE or an SAP affiliate company for informational purposes only, without representation or warranty of any kind, and SAP or its affiliate companies shall not be liable for errors or omissions with respect to the materials. The only warranties for SAP or SAP affiliate company products and services are those that are set forth in the express warranty statements accompanying such products and services, if any. Nothing herein should be construed as constituting an additional warranty.

In particular, SAP SE or its affiliate companies have no obligation to pursue any course of business outlined in this document or any related presentation, or to develop or release any functionality mentioned therein. This document, or any related presentation, and SAP SE's or its affiliate companies' strategy and possible future developments, products, and/or platforms, directions, and functionality are all subject to change and may be changed by SAP SE or its affiliate companies at any time for any reason without notice. The information in this document is not a commitment, promise, or legal obligation to deliver any material, code, or functionality. All forward-looking statements are subject to various risks and uncertainties that could cause actual results to differ materially from expectations. Readers are cautioned not to place undue reliance on these forward-looking statements, and they should not be relied upon in making purchasing decisions.

SAP and other SAP products and services mentioned herein as well as their respective logos are trademarks or registered trademarks of SAP SE (or an SAP affiliate company) in Germany and other countries. All other product and service names mentioned are the trademarks of their respective companies.

See [www.sap.com/copyright](http://www.sap.com/copyright) for additional trademark information and notices.

**THE BEST RUN** 