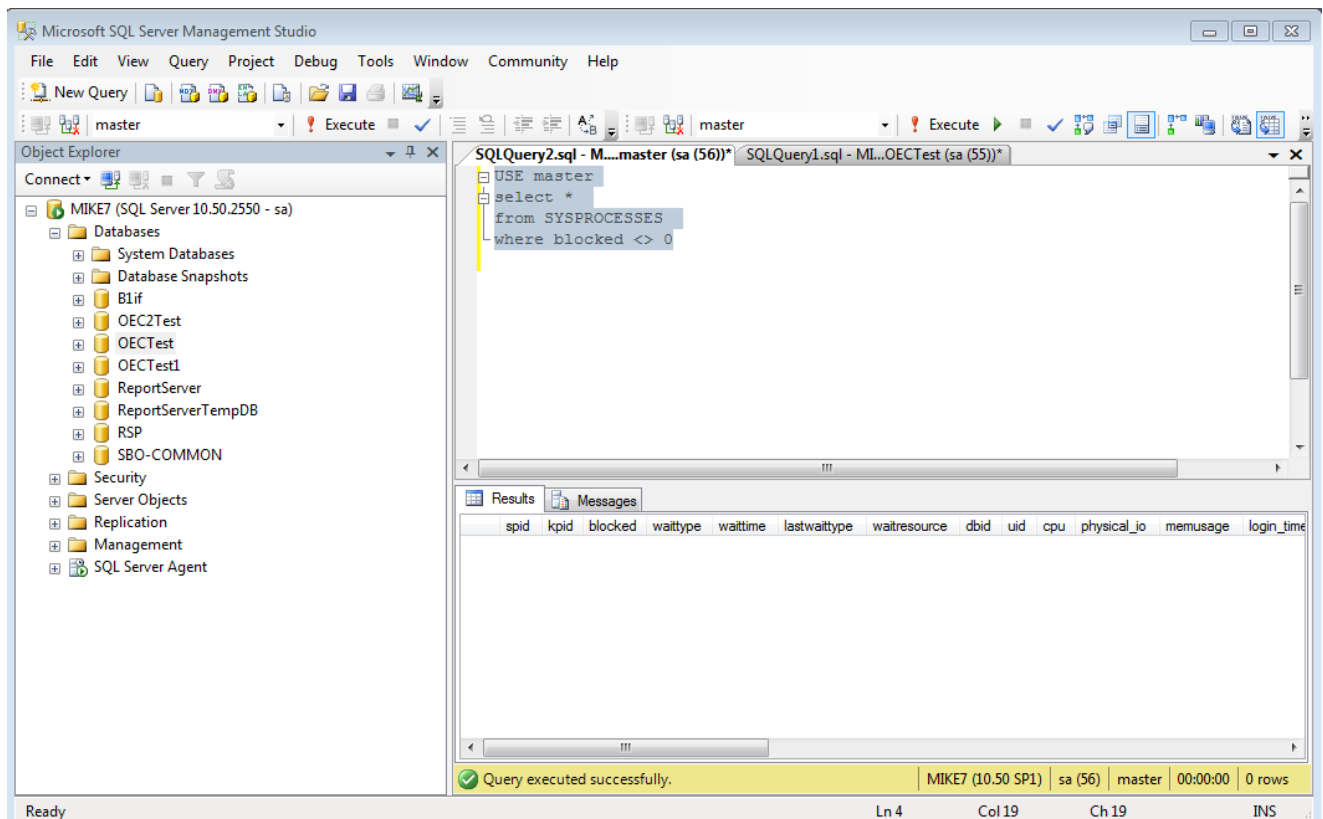


How to Check the Databases for Locks that can Effect SAP Business One

Record Locks are normal and part of the SQL Database functions. But an unresolved lock can slow or stop SAP Business One from running. If your system is experiencing intermittent long delays or SAP Business One halting in a cascading fashion from one work station to the next then SQL Locks maybe the issue.

- **This query will return all blocked processes for every DB:**

```
USE master
select *
from SYSPROCESSES
where blocked <> 0
```



- If there are results from this query then run the following query to get more information about the particular blocked process:

```
select hostname, hostprocess, *
from SYSPROCESSES
where spid = <enter the SPID # found in the first column of the Blocked Process Query above>
```

- If it is the case that locks are found on the database or SQL Server reports a deadlock situation in the ERRORLOG. Log file is found by checking the following location:

1. Go to Management Studio. Connect to the SQL Server instance
2. Go Management > SQL Server Logs
3. Double-click 'Current - ' and filter to get desired log files

